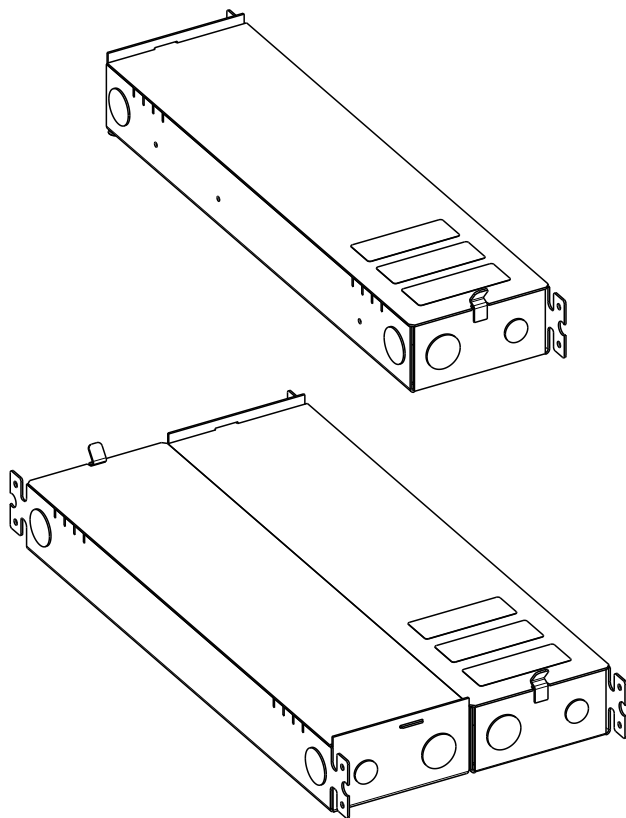


# COMPENDIUM CIRCLE

design Daniel Rybakken



**LUCE  
PLAN**

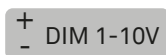
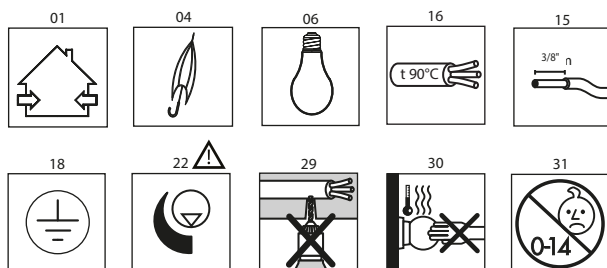
D81/16...D81/17...D81/18



D81/16

D81/17

D81/18



ACTIVE MODE

TYPE IC RECESSED - INHERENTLY PROTECTED  
 TYPE IC ENCASTRÉ - PROTECTION INHÉRENTE  
 ACCESS BEHIND WALL REQUIRED  
 ACCÈS REQUIS DERRIÈRE LE MUR

For supply connections use wires rated  
 for at least 90 °C

Vin: 120-277V 60Hz

Vout: 24Vdc Class 2 MAX

**WARNING:**

it is prohibited interconnection between Class 2 outputs.

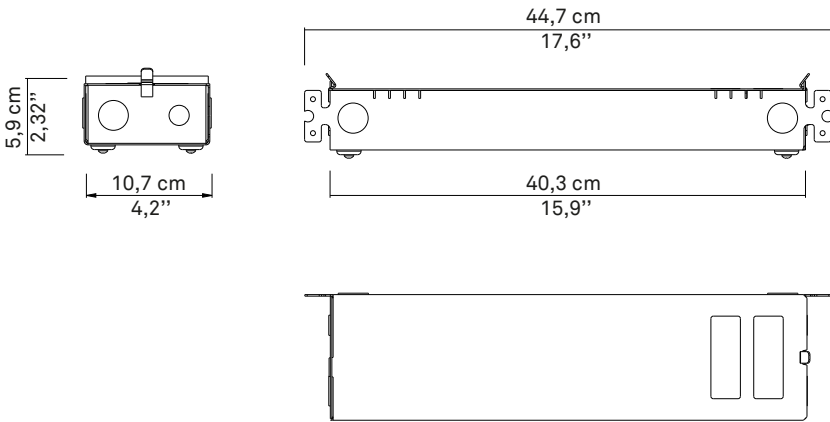
The product must be separated from other waste and sent to an authorized center for the treatment and recycling of electrical and electronic equipment.

El producto debe separarse de otros desechos y enviarse a un centro autorizado para el tratamiento y reciclaje de equipos eléctricos y electrónicos.

Le produit doit être séparé des autres déchets et envoyé à un centre agréé pour le traitement et le recyclage des équipements électriques et électroniques.

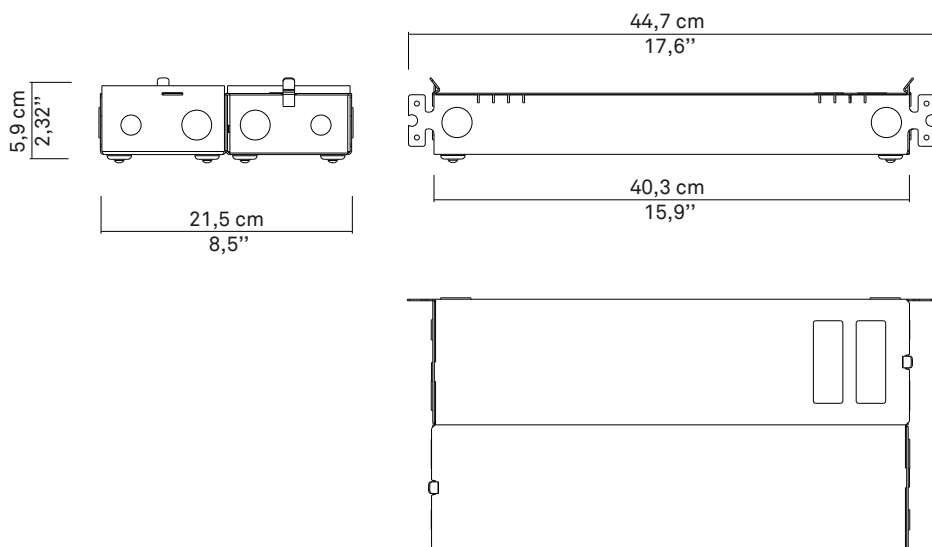
D81/16      MAX 80W 24Vdc (CV) Class 2

D81/18      MAX 60W 24Vdc (CV) Class 2



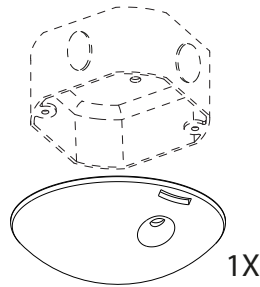
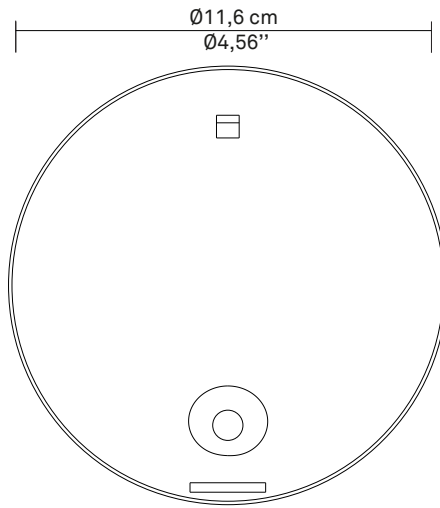
**kg** 1,95kg    **lb** 3 lb

D81/17 2xMAX 65W - 2x24Vdc (CV) Class 2



**kg** 3,9kg    **lb** 6 lb

D81/A



**kg** 0,3kg

**lb** 0,66 lb

D81/16

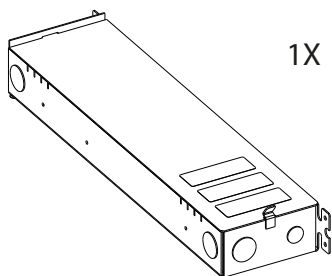
D81/18



a



b



1X

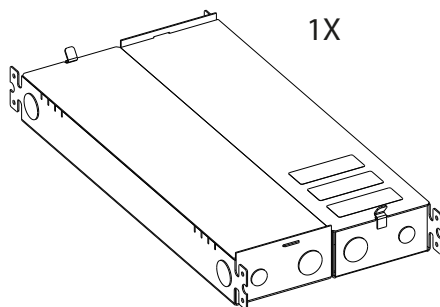
D81/17



a



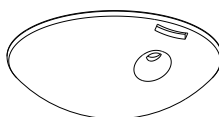
b



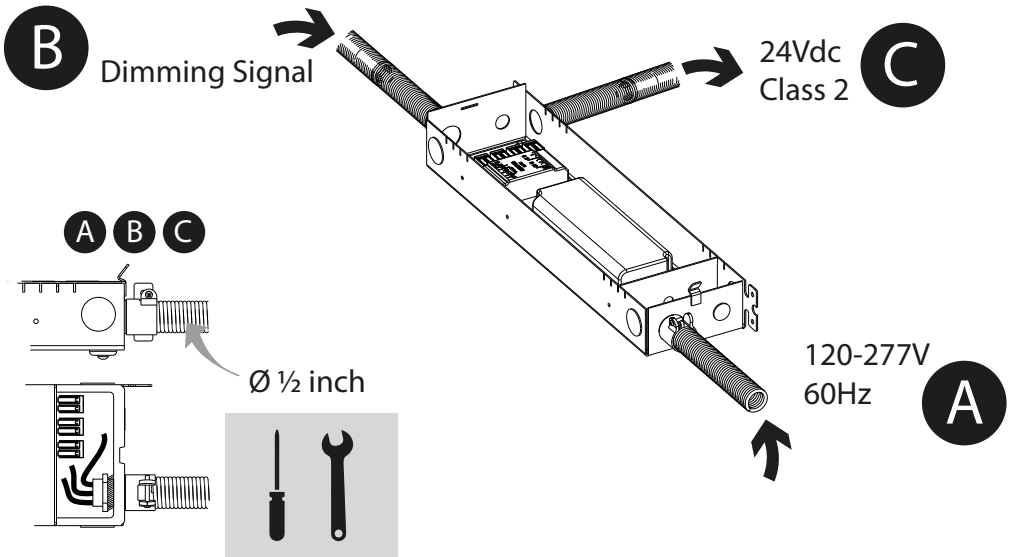
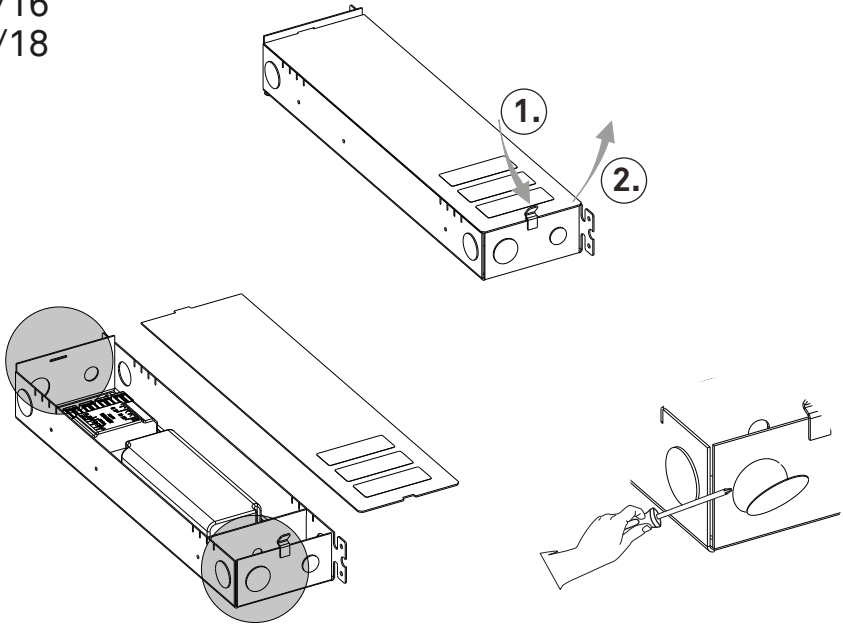
1X

D81/A

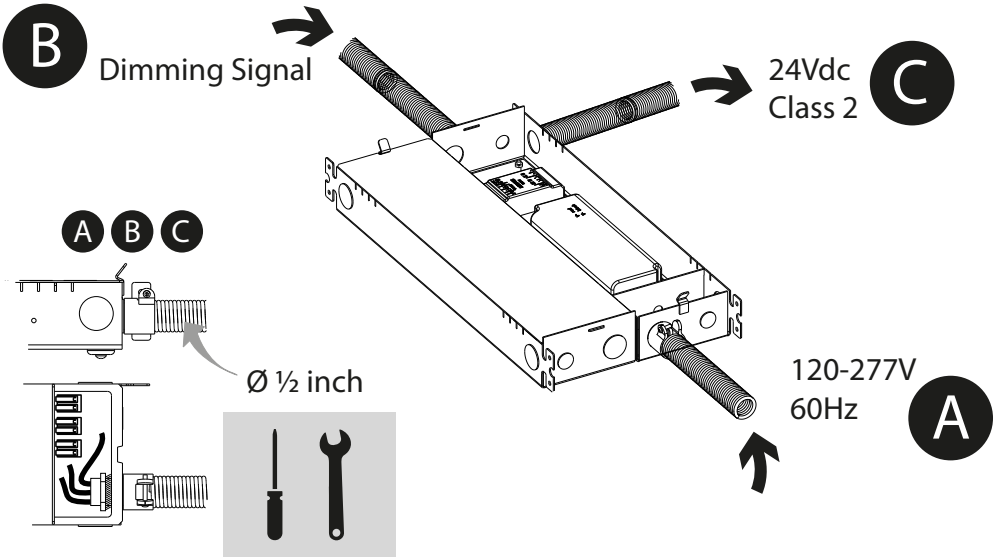
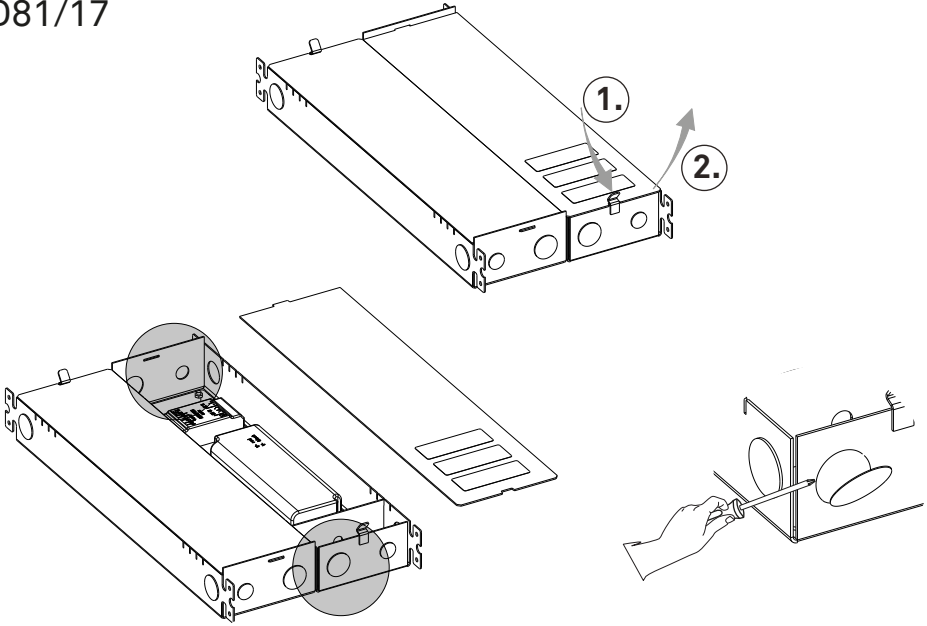
1X



D81/16  
D81/18



D81/17

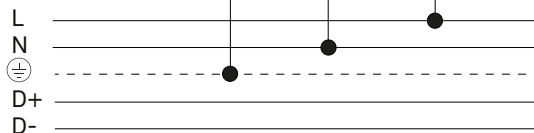
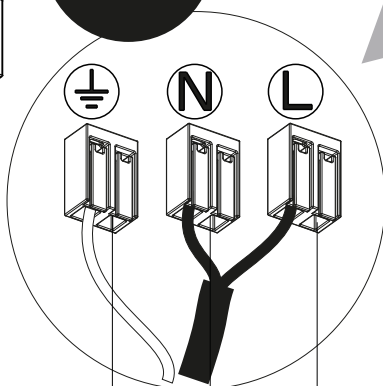
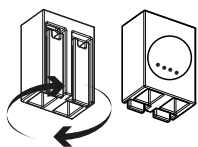
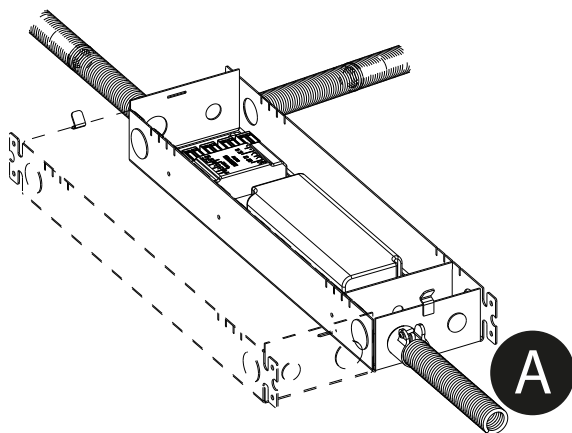




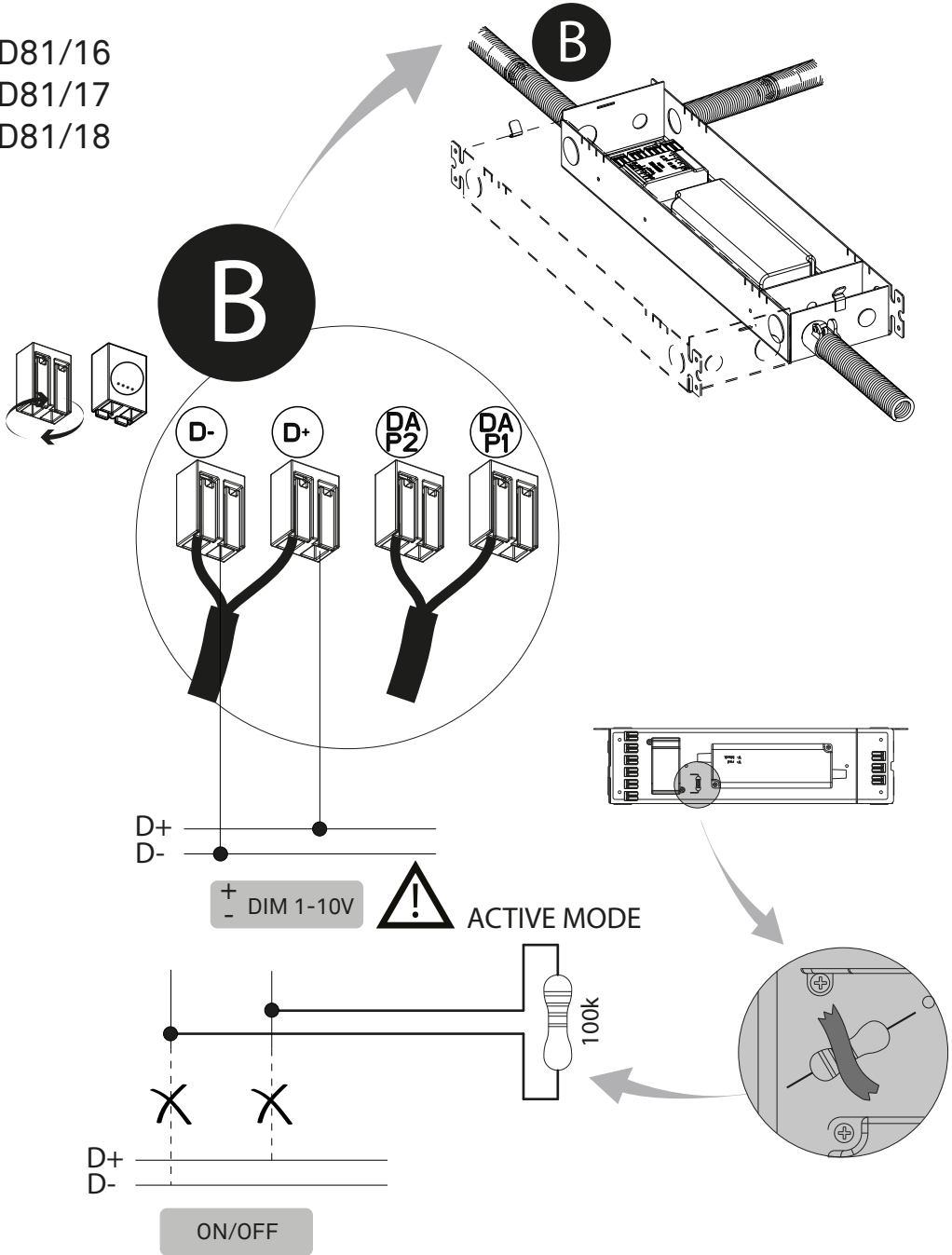


D81/16  
D81/17  
D81/18

OFF



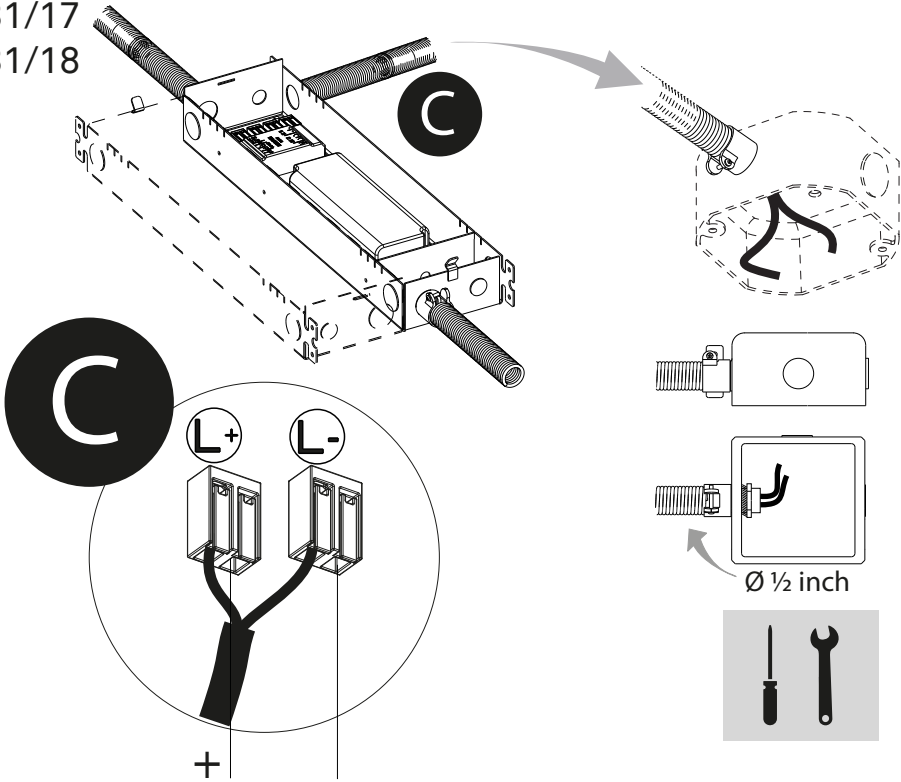
D81/16  
D81/17  
D81/18



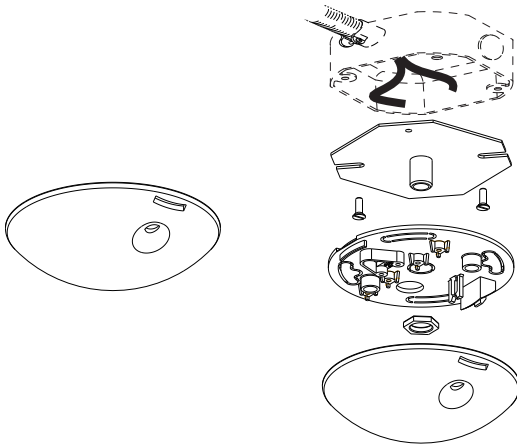
D81/16  
D81/17  
D81/18

**WARNING:**

it is prohibited interconnection between Class 2 outputs.



D81/A





[www.luceplan.com](http://www.luceplan.com)

D810IA106